

St Dunstan's School

Glastonbury



Transition Information

Headteacher's Welcome



Dear Year 6 Parents & Families,

It is a great pleasure to formally welcome you to the St Dunstan's School community. Whether this is your first experience with us or you are a returning family, we recognise that the transition to secondary school is a milestone moment. We are committed to supporting you and your child every step of the way.

Within this booklet, you will find essential guidance on uniform, communication, and the key staff who will be guiding your child's journey. As a parent who has navigated this process myself, I understand the mix of emotions these coming months bring. The first few terms of secondary school can bring both anxiety and excitement. Regardless of how your child feels, please be assured that we are here to ensure their transition is smooth, confident, and happy.

Children have only one chance at an education; it is my firm belief that every student deserves an inspiring education that challenges them to become the very best version of themselves. At St Dunstan's, we achieve this by combining high expectations with genuine care for every individual.

We are delighted that you are joining us at this very optimistic time. St Dunstan's is one of Somerset's top-performing schools, and we are proud that our student intake has grown considerably over the last four years. These successes are a credit to our dedicated staff, our brilliant students, and the crucial partnership we share with families. By choosing St Dunstan's for your child's education, you have recognised this achievement, and we look forward to you becoming an active part of our community.

We look forward to welcoming our new Year 6 students on Wednesday 1st July. Our evening information sessions will provide a chance to meet the team and answer any questions you may have.

Yours faithfully,

A handwritten signature in black ink, appearing to be 'P. Balkwill', written over a horizontal line.

P. Balkwill *Headteacher*

Welcome



Mrs Sarah Easterbrook **Head of Key Stage 3 & Transition Lead**

I am delighted that your child will be joining St Dunstan's School.

We take great pride in our transition programme and work closely with our main feeder schools, as well as other primary settings, to ensure that from Year 5 onwards, students are well prepared to make this important step into secondary education. We recognise that this is a significant decision - not only for students, but for parents and carers too.

As Head of Key Stage 3, my role is to ensure that the transition from primary to secondary school is smooth, positive and reassuring for every child and family. I have already begun visiting students in their primary schools to gather the information needed to place them in the most appropriate tutor groups and teaching sets, ensuring that each child is set up for success from the very beginning.

Our aim is simple: for every student to feel safe, confident and ready to thrive from day one. We want them to achieve highly, develop strong relationships, and feel a genuine sense of belonging within our school community.

We very much look forward to working in partnership with you to ensure your child fulfils their full potential.

Please do not hesitate to get in touch if you have any questions - there is no such thing as a silly question, and we are always here to help.

Yours faithfully,

A handwritten signature in black ink that reads "Sarah Easterbrook".

Sarah Easterbrook *Head of Key Stage 3*

Track Values

As a school, our goal is to educate, inspire and empower every student to achieve their potential and aspirations, becoming the very best versions of themselves.

Our Values

Our core values are the very heartbeat of our school. We don't just teach these values; we encourage our students to live them, fostering a real sense of belonging.

Truth: the foundation for trust and mutual cooperation, built upon honesty, fairness, and integrity.

Resilience: facing challenges, learning from setbacks and moving forwards.

Ambition: focus, concerted effort, and belief in yourself and others to achieve a goal.

Community: demonstrating connection, kindness and respect towards everyone.

Kindness: actively showing empathy and compassion, always striving to help others.



Transition Timetable

September

Open Evening

Throughout the Year

Parental Tours

October

Deadline for Applications to Local Authority

March

Letter from Local Authority offering places

May / June

School liaison team to visit Primary Schools

Transition Information shared with families

July

Induction days & new Parents' Evening for Year 6

September

New Year 7 intake start full time

Launchpad Days in first 2 days of the term

Pastoral care

At St Dunstan's School, we understand that the move from primary to secondary school is a significant milestone. While it is an exciting time of growth and opportunity, we also recognise that it can bring moments of uncertainty. That is why pastoral care is not simply a policy here - it is deeply embedded in our culture and central to the ongoing development of all our staff.



We are proud to create a nurturing environment where every student feels seen, heard and supported as they begin their journey with us.

We believe that a successful transition starts with a strong sense of belonging. To support this, Year 7 students spend the mornings of their first two days exclusively with their tutor groups. This dedicated time allows them to build friendships, establish routines and develop a trusted relationship with their Form Tutor before the full academic timetable begins.

The Form Tutor is the key point of contact for both you and your child and plays a central role in daily school life. Our carefully structured tutor programme takes place twice each day:

- Morning Check-in – setting the tone for the day, ensuring students are organised, ready to learn, and supported with any immediate concerns.
- Mid-Morning Reflection – a calm, structured session focused on attendance, behaviour and recognition, alongside shared reading to promote both wellbeing and literacy.

Beyond the tutor, a wider network of support ensures that every student is known and cared for:

- Heads of Key Stage oversee the progress and wellbeing of each year group and provide support where more complex needs arise.
- The Pastoral Team is a dedicated group of staff focused on student welfare and emotional support.

Student Leaders, trained to support their peers, are available at break and lunchtime to offer guidance, reassurance and a friendly presence.

Key Staff



Ms K Haden: Deputy Headteacher



Mr T Vickers-Armstrong: Assistant Headteacher



Mrs N Watson: Assistant Headteacher & Designated Safeguarding Lead



Mrs A Richards: Assistant Headteacher



Mrs P Whittaker: SENDco & Associate Assistant Headteacher

Key Staff



Mrs S Easterbrook: Head of Key Stage 3



Mrs L Mundy: Deputy Designated Safeguarding Lead



Ms L Ardeshir: KS3 Pastoral Manager



Ms J Denhart: KS4 Pastoral Manager



Mr S Wardle: Attendance & Welfare Officer

Your First Day

To support a smooth and confident start, we have organised dedicated transition days on **Monday 7th & Tuesday 8th September**.



On these days, students will experience a carefully planned blend of lessons, assemblies and “launchpad” sessions with their tutors. This will allow them to become familiar with the school site, key staff, their timetable and the daily routines that will underpin their success.

Our first full timetable day will begin on Wednesday 9th September.

On Monday 7th September, only Year 7 and Year 11 students will be on site. This reduced number allows our new Year 7 students to settle in, explore the school environment and build confidence in a calmer setting. On day two, Year 7 will participate in our “launchpad” events.

Please note: students should bring their PE kit on both transition days in September.

To ensure the start and end of the day run smoothly, we ask all families to note the following arrangements:

Arrival

Students should arrive between 8:15am and 8:25am. We encourage Year 7 families to arrive towards the earlier part of this window to help manage traffic and ensure a calm start to the day. If your child uses the bus these timings will not apply.

Entrance

On the first day only, all Year 7 students should enter via the gymnasium entrance. Staff will be present to guide students and families. You are very welcome to walk your child to the gate; however, we kindly ask that students enter the hall independently from that point.

Parking

To keep routes clear for school buses, please do not use the turning circle or the lower section of the car park for drop-off or collection. Limited parking is available at the top of the car park. We ask families to park considerately off-site, being mindful of local residents, driveways and permit restrictions.

End of the Day

On both transition days, the school day will finish slightly earlier at 3:00pm. Students who are waiting for siblings or school transport will be supervised in the canteen until 3:15pm.

On Track



Our behaviour curriculum is taught in a number of ways. In order to promote positive behaviours and teach these explicitly, students are taught to be 'On Track'. We believe that all students should be the best version of themselves. Staff are encouraged to use positive language to remind students of appropriate learning behaviours.

These are rewarded and recognised by staff as part of our rewards and praise procedures. Assembly and Tutor Time sessions are also dedicated to teaching these behaviours.

| | |
|--------------------------------|---|
| <u>O</u>rganised | Equipped, on time, and completing homework |
| <u>N</u>eat | Smart, well presented books demonstrating your best work |
| <u>T</u>rying hard | Trying your hardest and rising to the challenge |
| <u>R</u>esponsible | A role model to others in your appearance, actions and words |
| <u>A</u>ctive | Listening, responding, and participating in lessons |
| <u>C</u>ommunity minded | Supporting staff and other students to create a positive learning environment for all |
| <u>K</u>nowledgeable | Knowing key information, concepts and terminology for each subject/unit |

On Track

In order to create a positive learning environment, we recognise and praise good learning behaviours. Recognising and celebrating positive behaviours is an essential part of our behaviour curriculum.



- Positive and negative behaviours are awarded and recorded using Arbor; we aim to award positive and negative points on a 5:1 ratio or better.
- Celebration Assemblies are held at the end of each term and are one of the main ways in which we formally recognise and celebrate success.
- Students collect reward points throughout their time at St Dunstan's School and rewards are issued as part of a cumulative total over a term, month, year and key stage.
- Rewards are logged on Arbor, where staff, parents and students are all able to see them.
- Rewards are issued when a student demonstrates behaviour that meets and exceeds our 'On Track' framework.



Rewards

Examples of our rewards include:

- Bronze, Silver, Gold and Platinum awards for reaching key points thresholds
- Rewards cards for effort, exemplary work or consistently showing your best
- Attendance rewards and incentives
- Invitations to end of term celebration events and the end of year Celebration Carnival

On Track

What happens if I receive negative points?

Where possible, we look to teach positive behaviour through a blend of praise, routines and developing a positive peer culture.



However, there are times when it is appropriate to put in place consequences when a student makes decisions that negatively impact their learning or the learning of others, or undermines the positive culture of the community.

St Dunstan's School has a set of fair and proportionate consequences in place in order to reaffirm our expectations and ensure that students understand that negative choices are not acceptable.

We log all behaviour incidents on Arbor and parents can review these on a regular basis to keep a track of their child's conduct.

St Dunstan's School expects every student to be Ready, Respectful and Responsible.

Ready - Students are expected to demonstrate their readiness to learn through their appearance, equipment and completion of homework.

Respectful - Students are expected to act and speak in a kind and respectful manner, upholding our strong community values.

Responsible - Students are expected to act in a manner that supports their learning and that of others at all times.

There are a range of consequences in place including detentions, extended detentions and for more serious offences, internal or external suspensions. If you would like to know more about our behaviour policy and processes please visit our website policies page.

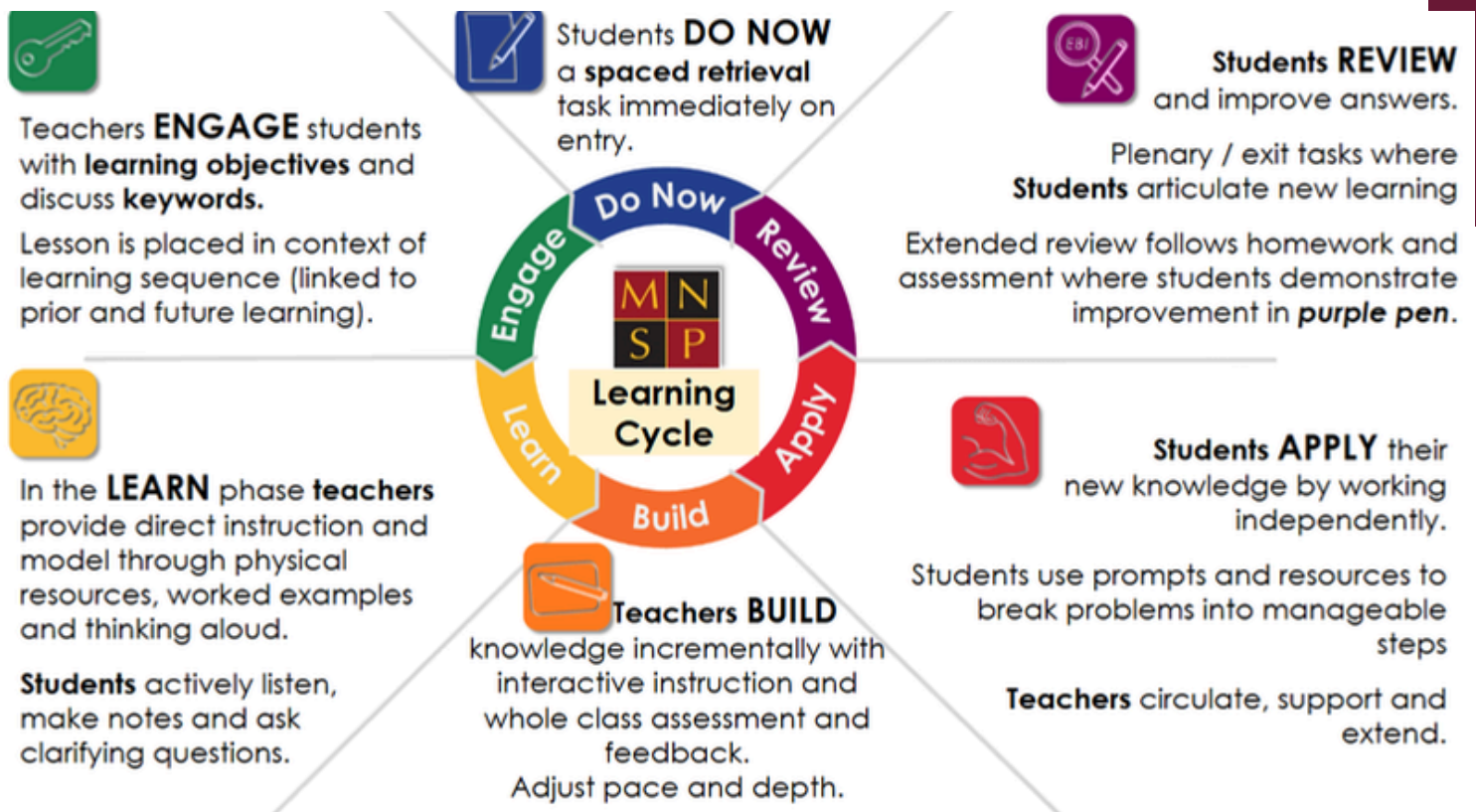
It is important to note that the vast majority of students make positive choices and are celebrated for this each and every day. Just remember to use every chance to be ready, respectful and responsible!

The Learning Cycle

At St Dunstan's, every lesson follows the same structured 6-Part Learning Cycle.

Backed by the latest educational research and proven methods from top-performing schools, this consistent routine reduces the cognitive load for students.

By sequencing learning into clear, manageable steps, we ensure every child has a clear understanding of the study expectations in every room, allowing them to focus on learning, making progress, and building personal skills.



What to expect in lessons?

Every lesson starts immediately with a 'Do Now' task - a fast paced, 10-minute recap that supports students to lock-in prior knowledge and skills. From there, lessons cover a range of dynamic and engaging activities, mixing collaborative pair work and small group discussions with focused, independent study.

In our school, we support every child to build their classroom confidence, recognising this is a skill that can be grown. During the day, students are active participants who listen and engage in discussions proactively. Every child, regardless of their ability or starting point, will regularly practice reading aloud and speaking in front of their peers, building vital communication skills and a belief in themselves.

Home Learning

Home Learning is used to reinforce and review students' prior learning. In some cases, home learning may ask students to explore ideas needed for future learning, thus developing the ability of our students to conduct research using appropriate resources.



Timetable

To help our students manage home learning, subject teachers will set tasks in accordance with a rota. This prevents too many activities being set on the same day. Teachers enter details of what has been set on Google Classroom and on Arbor, this enables both students and parents to check what has been set and see when the due date is. Students will be able to access support and resources needed to complete their home learning through Google Classroom.

Rewards and Sanctions

Students who complete homework to a good standard will be recognised by the class teacher and the student will be rewarded with a Track Point. Students who repeatedly submit homework late, or to a poor standard, will receive a detention so that they are supported to catch up on the work they have missed.

Home Learning Club

Facilities to complete home learning are available in the Library from Monday to Thursday between 3:15pm and 4:15pm. This includes access to IT, revision guides and reference books through our non-fiction Library sections.

Home Learning Frequency

| Frequency | Subjects |
|-----------------------------|-----------------------------|
| Weekly | English, Maths & Science |
| Fortnightly | French, Geography & History |
| At least once per half term | All other subjects |

Timings of the Day

The School Timetable

We have a fortnightly timetable. This means that Week A and Week B schedule the same subjects at different times and days. Each student is given a copy of their timetable at the start of the term.



| | | |
|----------------------|---------------------------------|------------------------------|
| 8:40 | Students arrive onsite | |
| 8:45-8:55 | AM Registration | |
| 8:55-9:55 | Period 1 | |
| 9:55-10:55 | Period 2 | |
| 10:55-11:15 | Break 1 - Years 8 & 11 | Tutor Time - Years 7, 9 & 10 |
| 11:15-11:35 | Tutor Time - Years 8 & 11 | Break 2 - Years 7, 9 & 10 |
| 11:35-12:35 | Period 3 | |
| 12:35-12:45 | KS4 - Lunch Counter Years 10-11 | |
| 12:45 Onwards | KS3 - Lunch Counter Years 7-9 | |
| 1:10-1:15 | Changeover | |
| 1:15-2:15 | Period 4 | |
| 2:15-3:15 | Period 5 | |

*Please be advised that this is indicative only and may be subject to changes

Uniform & Equipment

We are proud of our uniform at St Dunstan's School. It plays a key role in promoting a sense of belonging to our community.

All St Dunstan's branded uniform such as blazers, ties and PE kit items can be purchased directly from our supplier, South West Schoolwear in Wells.

If your child attends school without the correct uniform, they will be sent to our Uniform Hub to borrow items for that day. We will be in touch if your child is repeatedly borrowing items, so that you are made aware and can correct this swiftly.

At St Dunstan's School, we expect all students to be fully equipped and prepared to learn.





Essential Equipment

All students will be expected to have:

- Pencil
- Ruler
- 2 x Black Pens
- Purple Pen
- Mini White Board
- White board pen
- Scientific Calculator



Uniform & Equipment

| |  |  |
|--|--|---|
| School blazer | Navy blue with logo (from supplier) | Any other type of Blazer |
| White school shirt | Long or short-sleeved. Suitable to be tucked in, with a collar stand which will support the tie | A polo shirt |
| Jumper (Optional) | Navy blue V-neck to fit under the blazer. This can be worn in addition to a blazer but not instead of | Any other type of jumper |
| School trousers/Tailored Shorts | Plain, smart, black, full length, touching the shoe Summer Term - knee length, tailored, black shorts (boy or girl) | No faded trousers, denim or denim look, chinos, joggers, leggings or hipsters should be worn |
| School skirt | Black, knee length (5cm above the knee and 7cm below), Charlton drop waist pleated skirt, approved by the school | Extreme length, tight or clingy Must not be rolled up Must not be stretchy fabric material |
| School tie | Burgundy with a white stripe. Worn full length. <i>(Only Year 11 Prefects/Student Leaders will wear a blue tie)</i> | Frayed ends |
| School Shoes | Flat black leather (or leather style) formal school shoes Typical styles of shoes are Oxford, Derby, Brogue or loafer No sports branding - Nike, Adidas etc Please refer to the guidance carefully and contact the school if you are unsure before purchasing | Black Nike Air force 1s or similar style branded shoes Trainer branded shoes E.g. Converse/Vans/Nike/Adidas Leather and canvas trainers or shoes that would be classed as skater shoe or resemble a trainer style shoe Boots or Chelsea boots Please be advised that stores may provide misleading or incorrect guidance regarding footwear. Parents are always advised to seek advice if they are unsure before purchase |

Uniform & Equipment

| |  |  |
|---------------------------|--|--|
| Socks/Tights | Socks - plain grey or black Tights - plain black | No other colour No white socks |
| Coat/Jacket | Sensible, warm and waterproof coat Must fit over the blazer | No sweatshirt tops, hoodies or other fabric garments |
| General appearance | Smart with correct uniform Natural coloured hair Neutral, discreet make-up Rewards badges and one personal pin badge only | Extreme hair styles and unnatural hair colouring Long nails, builder gels, extensions or acrylics are not allowed |
| Jewellery | Watch, one band or bracelet only, one ring only, one plain, simple stud or small earring touching the bottom of the earlobe (no larger than 6mm in diameter) | No other sorts of ear piercings, including 'spacers, bars, or spikes' Multiple bracelets, bands or bangles No facial piercings or jewellery including tongue studs Clear nose studs /retainers are not permitted No necklaces Inappropriate jewellery will be confiscated |

| | |
|---|--|
| <p>PE Kit Summary for all seasons</p> <p>Black shorts (Boys), sports leggings or skort (Girls) Black and Maroon PE polo with St Dunstan's logo White trainer socks Trainers (indoor and hardcourts)</p> <p>Items for Seasonal Sports</p> <p>Boots with moulded studs (Boys/Girls for winter sports on grass) Gum shield (Boys/Girls for Hockey/Rugby) Shin pads (Boys/Girls for Hockey/Rugby/Football) Plain black long socks for shin pads</p> | <p>Optional</p> <p>Navy track top (long-sleeved) with logo Black rain jacket with logo Black sports leggings with logo (Girls) Sports hoodie with St Dunstan's logo Black track pants with logo (Boys) Turquoise PE hoodie with logo Maroon reversible rugby shirt (Boys/Girls) Maroon knee length socks (Boys/Girls) Boot bag (optional)</p> |
|---|--|

Mobile Phones

Following new Department for Education (DfE) guidelines, all schools must become entirely mobile phone-free environments by the new academic year. This means our current 'not seen, not heard' policy will be updated.

Starting from September 2026, students will be required to store their phones and other electronic devices such as smart watches or earphones in a signal blocking pouch.

These pouches are magnetically sealed, restricting access to devices throughout the day. Pouches will be available from the school and we will write to all families in July to provide you with further information about how to acquire these. Students will be asked to place items in their pouches and store these safely in their bags. At the end of the day, students will be able to open their pouches whilst exiting the site.

We are aware that some students with significant health conditions such as diabetes, require the use of their phone. We would like to reassure you that bespoke pouches and arrangements will be put in place to support these individuals. If this applies to your child, please contact the school to notify us and discuss whether or not these arrangements will be required.



Enrichment

Across the year there are a range of activities and opportunities for students to be involved with. These include-

- School production and concerts
- Sports clubs & fixtures
- Peripatetic music lessons
- Guest speakers & authors
- Lunch and after school clubs
- Trips

Clubs, activities and events are advertised and shared in our weekly newsletter, Arbor communications and on our Facebook page.

Every year at St Dunstan's School, KS3 students enjoy fun-filled drop-down days in which they choose from a range of trips and school based activities.

Enrichment events take place during the last week of term each year. It is a central part of our Character Education Programme, as the week provides all of our students in Years 7-9 with the opportunity to develop and build skills that are underpinned by our Track values.



Arbor & Communication



At St Dunstan's School, we use Arbor as our Management Information System (MIS) to securely store and manage all student and parent information. As part of this, all parents and carers will have access to the **Arbor Parent Portal (web)** and **Parent App (mobile)**, providing a simple and effective way to stay connected with your child's school life.

Through Arbor, you will be able to view key information such as academic progress, attendance, behaviour, and homework, as well as receive important school communications directly via email, in-app messages or push notifications. The system also allows you to manage practical aspects of school life, including payments and trip bookings, and to update your personal details when needed. Arbor supports multiple guardians and can be accessed via web browsers with translation tools if required.

The Arbor Parent App plays an important role in day-to-day communication. It allows you to receive and respond to messages from the school and stay informed through real-time notifications. Over time, this will replace many traditional text messages, including notifications such as late arrivals, minor incidents and whole-school updates such as closures.



Getting Started with Arbor

1. Set up your account - You will receive a welcome email with instructions to activate your account and create a password.
2. Download the app - Search "Arbor" in the App Store or Google Play and log in using your details.
3. Stay informed - Enable push notifications to receive real-time updates from the school.

Arbor & Communication



Communication

We value open communication and understand there are times you'll need to speak with us. For general enquiries, our website is your most comprehensive resource.

We also provide regular updates via our weekly newsletter and official Facebook page. For individual or year-specific updates, please look out for emails sent directly via Arbor.

If you have a specific concern regarding your child, please contact their tutor in the first instance.

Please see the guidance below, detailing how to contact key members of staff. When you email, please put a clear subject line like this:

- Academic: For questions about timetables, homework, tests, how well your child is doing, or what they're learning.
- [Name of Subject]: For questions about a specific subject (e.g. "Maths").
- [Name of Tutor]: For messages for your child's tutor.
- {Pastoral Team}: For questions about your child's feelings, friendships, or well-being.
- Attendance Team: For anything about coming to school or being on time.
- SEND Team: For questions about your child's special educational needs.

When we get your email, we'll send you an acknowledgement message to let you know we have received it, before sending it to the best person to help you. We will always seek to respond to you in a swift and timely fashion.

Please send all initial emails and inquiries via the secretary account **secretary@stdunstans.mnsp.org.uk** in order to make sure it is sent to the correct person. Due to our email filtering and security, emails directly to staff may be sent to junk and could be missed. Using this method will provide you with peace of mind that your email has been received safely.

If you have a matter you wish to discuss urgently, we advise that you contact us via main reception.

Attendance



At St Dunstan's School, we place a very high priority on excellent attendance from the very start of Year 7. We know that strong habits established early on are critical to long-term success.

We expect all students to attend school every day, with a minimum expectation of 96% attendance, and we work closely with families to support this. As part of our commitment to safeguarding and strong communication, parents will be contacted on the first day of any absence so that we can understand the reason and offer support where needed.

Where attendance begins to fall, we act quickly and supportively - this may include early communication, meetings with pastoral staff, attendance clinics and, where needed, involvement from our wider support teams to remove any barriers to attendance.

Our approach is always to work in partnership with families, offering guidance, care and practical support, but we are also clear that regular attendance is essential and will be monitored closely from the outset.

| Band | % | Sessions/Days Absent | Classification | Impact |
|------|--------------|----------------------|--------------------|-------------------------------|
| 1 | 100% | 0 | Exceptional | No absence |
| 2 | 98% to <100% | 8/4 | Strong Standard | Minimal absence |
| 3 | 96% to <98% | 15/8 | Expected Standard | A few justified absences |
| 4 | 93% to <96% | 27 / 14 | Needs Attention | Occasional absence |
| 5 | 90% to <93% | 38 / 19 | Urgent Improvement | At risk of persistent absence |
| 6 | Below 90% | 39/20 | Critical Action | Requires urgent intervention |
| 7 | Below 50% | 47/95 | | Requires extreme intervention |

Punctuality

All students are expected to arrive at morning registration on time, please be advised of the following:

- The school gates will be shut at 8:40am. Any students arriving after this time will be marked down as late.
- Students are expected to arrive at their tutor rooms for a prompt start at 8:45am.
- Students who arrive late at the start of the day or to lessons will receive a consequence in line with our behaviour expectations and policy.

Assessment & Reporting

Assessment and Reporting Framework

This section details our approach to summative assessment, feedback, and progress tracking throughout Key Stage 3. Our system provides clear, actionable feedback, supporting students to take ownership of their learning.

Assessment Frequency and Preparation

The frequency of assessments is determined by a subject's curriculum hours:

Core Subjects (4+ lessons per fortnight): Six assessments per year.

Specialist Subjects (≤ 3 lessons per fortnight): A minimum of three assessments per year.

Understanding "Good Progress"

Assessments increase in complexity and depth as students move from Year 7 to 9. Therefore, maintaining the same grade represents strong consistent progress, as the student is meeting more demanding curricular standards each year.

Note: Academic progress is rarely linear. It is normal to see small fluctuations in grades as students navigate different topics and skill sets.

Reporting Home

Parents receive three formal Progress Reports per academic year, which are delivered via email. These reports provide a comprehensive overview of a student's academic standing and personal development, featuring the following data:

Subject Targets: The aspirational flight path grades established for each subject.

Current Attainment: A summary of the student's demonstrated academic performance to date.

Attendance Record: A breakdown of the student's attendance percentage and punctuality.

Attitude to Learning: An evaluation of the student's engagement, motivation, and effort in the classroom.

Behavioural Standards: An overview of the student's conduct and adherence to the school's expectations.

Important Places



The Canteen



The Lucas Block



The Assembly Hall



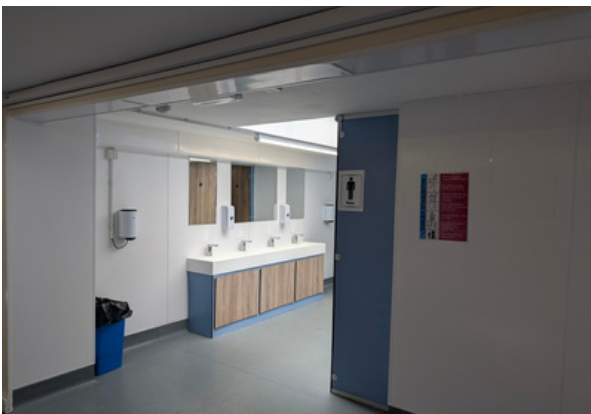
The SEND Hub



The Science Block



The English Block



The Toilets



The Sports Hall

Food & Drink

The canteen is available to students at break and lunch. Students pay for meals using a QR code which links to Arbor. Parents need to put money on their child's account to purchase food and drink. We will provide students with their QR code on the first day in September.



The canteen has a range of hot and cold snacks available at break. Students can choose between a hot or cold meal at lunch. The canteen has tables and benches for all students to eat their lunches. Students with packed lunches are welcome to use this space too.

To support Year 7s in the first few weeks, students will leave for lunch 5 minutes early. There is also a separate lunch area in the assembly hall for students to access at lunchtime only.

| Week 1 | | | | | | |
|--------------------------------------|---|--|--|--|--|--|
| | | Monday | Tuesday | Wednesday | Thursday | Friday |
| Main Course | 1 | Sticky Ginger Soy Glazed Chicken With Rice | Pork Sausage with Yorkshire Pudding Mash & Gravy | Herb Crusted Turkey with Roast Potatoes, Cranberry sauce and Gravy | Beef Lasagne with Garlic Bread | Fishcake & Chips Breaded Chicken Burger With Lettuce & Tomato |
| | 2 | Cauliflower Pepper Curry with Rice | Chilli Cream Cheese Pinwheels | Vegetable Stuffed Peppers | Halloumi & Vegetable Stack & Potato Puff | Vegetable Kiev |
| Vegetable Choices | | Broccoli & Green Beans | Peas / Carrots | Cauliflower Cheese & Carrots | Salad Coleslaw | Baked Beans / Peas |
| Jacket Potatoes | 3 | Jacket potatoes | Jacket Potatoes | Jacket Potatoes | Jacket Potatoes | Jacket Potatoes |
| Fillings Please choose one choice | | Cheese/Tuna/Beans | Cheese/Tuna/Beans | Cheese/Tuna/Beans | Cheese/Tuna/Beans | Cheese/Tuna/Beans |
| Dessert | | Lemon Sponge | Apple Pie with Custard | Aussie Crunch | Orange & Raspberry Cake | Double Chocolate Cookie |
| Snack Bar | | Panini | Panini | Panini | Panini | Panini |
| Pasta Bar | | Tomato & Basil | BBQ Chicken Tomato & Pesto | Bolognese Tomato Basil | Pesto Turkey Arrabiata | Tomato & Basil |

*Please be advised that this is indicative only. The menu will change across the year.

SEND

At St Dunstan's School, we are proud to support students with a wide range of additional needs, ensuring that every child is able to access learning and thrive within our community. We place great importance on working in partnership with families, and we actively encourage parents and carers to contribute to the development and review of these profiles so that they accurately reflect each child's needs.

In most cases, this support begins in the classroom, where teachers use carefully planned strategies tailored to individual students. These approaches are recorded in a personalised Pupil Profile, which is shared with staff to ensure consistency and understanding across all lessons.

Where appropriate, additional support may also include targeted interventions, support outside the classroom, or access arrangements for assessments and examinations.

All additional provision is coordinated by our Special Educational Needs and Disabilities Coordinator (SENDCo), Mrs Whittaker. Mrs Whittaker can be contacted via the school email address and will be happy to support with any queries or concerns. Further detailed information about our provision can be found in the school's SEN Information Report, available on the school website.

We are offering enhanced transition for students with SEN - please contact Mrs Whittaker for further details.



ARC Students

The ARC (Autism Resource Centre) is a specialist resource base linked to St Dunstan's School. All of the students in the provision have an Education, Health and Care Plan (EHCP) and have a diagnosis of ASC (Autistic Spectrum Condition). Students attending the ARC are placed by the local authority as per the named provision on their EHCP. It is not a provision that is accessible to all students.



The centre is in a building within the grounds of St Dunstan's School. Students at the centre have blended learning opportunities with some lessons taught by specialist staff in the centre as well attending some mainstream lessons and other whole school activities.

Young people at the base receive Quality First Teaching from specialist staff and undertake GCSEs. There are also opportunities for learning activities such as the Duke of Edinburgh Award, work experience and creative therapy sessions.

The ARC is led by Mr Ray. Mr Ray can be contacted via the school email address and will be happy to support with any queries or concerns.

ARC Staff



Sophie Addison
Executive Head Teacher -
Special School & Alternative
Provision Hub Strategic Lead



Harriet Wills
Assistant Head Teacher -
Resource Bases & SEND
SENCO Lead



Tanya Pillinger
SENCO Support Officer



James Ray
Acting Base Lead



Mathew Chadbone
Teacher



Lucy Sawyer
Teaching Assistant

Families in Receipt of FSM

Pupil Premium Students

The Pupil Premium Grant is a vital government initiative designed to level the playing field for England's most vulnerable and disadvantaged students. This funding aims to bridge that gap, providing schools with the resources to give these students the targeted support they need to thrive.

We offer comprehensive, planned educational support for eligible students.

- High quality teaching and learning
- Resourcing of the curriculum
- Uniform Exchange Scheme: Free uniform (look for summer dates to come and see what is on offer)
- Specialist Equipment & Exam Preparation: Long-term loan scheme for essential equipment and revision materials
- Financial Assistance for Uniforms: One-off payment per year (up to £70 per student) for key uniform purchases. Apply from June to the start of academic year before purchasing
- Peripatetic Music Lessons: Financial support available. Apply within the first two terms
- Curriculum Enrichment: Subsidised participation in curriculum-linked trips and opportunities. Upon request



Additional Support

Resource Provision: Access to essential equipment packs (e.g Food Tech ingredients, Art supplies)

Targeted Interventions: Support in English, Maths, and Science

Uniform Hub: Temporary loan of individual uniform items, with agreed return

Online Learning & Resources: Free access to Seneca Learning and other educational platforms

Exam Preparation: Out-of-hours support before public examinations

FAQs

Will I get lost?

"On your first day you will spend some time getting familiar with the site. Our school site is small so it is quite easy to find your way around. Teachers also stand in the corridors during changeover between lessons, so you can ask them for help. You can also ask older students who will send you in the right direction."

"PE do seasonal sports changing each term. All students participate in each sport. Students have a chance to try football, rugby, netball, basketball, cricket, rounders and athletics. There are also opportunities to try out a range of other sports and participate in clubs after school."

What will we learn in PE?

Are there spaces for Year 7 at breaks and lunchtime?

"We have split breaks which means that you will have lots of room at break to spend with your friends. There is an allocated court for students to play football at break and lunch. At lunch Year 7 students are able to use the assembly hall and for the first few weeks we allow Year 7s to go to lunch early."

"You will see your tutor twice a day, so this is a good chance to speak to them if you have any questions or concerns. You can also come and speak to our Pastoral team; Mrs Easterbrook or Ms Ardeshir."

Who can I speak to if I have a problem?

What if I can't answer a question ?

"Just remember that learning is about making mistakes or having to think hard to solve a problem. We encourage you to try and work out the problem yourself by looking back in your book or asking a partner. If you are really stuck ask your teacher. Don't be afraid to have a go and give it your best guess. Sometimes you will surprise yourself with what you already know."

" We publish a termly club and PE schedule. This is shared with your tutor and sent home. We also share important information on social media or email letters home."

How will I know about clubs and activities?

FAQs

How will I know what my lessons will be next year?

"On your first day we will give you your timetable. We run a two week timetable called Week A and Week B. Each week your timetable will be slightly different. We try and space out all your subjects across the two weeks so you will see your teachers regularly."

"Speak to your teacher or tutor. If they are concerned they will ask you to go to reception to speak to our first aiders, who will contact home if needed. If you have a cut or scrape go to reception and they will help you."

Who do I speak to if I am hurt or feeling unwell?

When can I go to the library?

"The library is available to students during break and lunch, Monday to Thursday. It is available after school on some days too. You will also have a chance to visit the library during some English lessons."

"Students should use the toilet during breaks and lunch. If you need the toilet during lessons, we encourage you to go during changeover times."

When can I use the toilet?

Will I be with my friends from primary school in lessons?

"We try and make sure that you will be in a tutor group with some of your friends and you may find you will be with people you know in some lessons. Most students begin to make new friends very quickly and begin to branch out from their primary school friends."

"Our uniform hub has spare items of uniform and equipment to loan if you need a temporary solution. The hub also collects lost property, so you may find that the item you have lost has already been returned."

What happens if I lose something?

"Preparing students to make their mark on the world."



 www.stdunstansschool.com

 secretary@stdunstans.mnsp.org.uk

 01458 832943

 Wells Road, Glastonbury, BA6 9BY