

POST – 16 BOOKLET



WHAT ARE MY OPTIONS WHEN I LEAVE BUCKLER'S MEAD ACADEMY ?

A guide for
students and
parents

Post - 16 Education

What are my options ?



The law states;

You can leave school on the last Friday in June if you'll be 16 by the end of the summer holidays.

You must then do one of the following until you're 18:

- stay in full-time education, for example at a college
- start an apprenticeship or traineeship
- spend 20 hours or more a week working or volunteering, while in part-time education or training

Stay in full-time education

This could be a qualification taken at a sixth form, college or training provider, totalling 540 hours of learning time per year, or around 18 hours per week. You can choose to study A-Levels or a vocational course in a huge variety of subjects.

Combine work and study

This involves paid work for an employer while studying for a qualification as part of your training. These can be;

- Traineeships
- Supported internships
- Apprenticeships
- School leaver schemes

You can apply for an apprenticeship directly via

www.findapprenticeship.service.gov.uk/apprenticeshipsearch

Traineeships – this is an option for students who would like to do an apprenticeship but may not have the experience, skills or qualifications to do so yet. Traineeships can last up to six months and involve a work placement, Maths and English qualifications and support with finding an apprenticeship but they are not paid employment.

T Levels

T Levels are an alternative to A Levels and apprenticeships. They are equivalent to 3 A Levels. They require a 45 day industry placement over 2 years.

How do I pay for post-16 education and training?

Education and training in the UK are free for young people until they turn 19. In addition, there is a 16-19 Bursary Fund to help students from low income families pay for things like transport, food and stationery, which can be accessed at any sixth form, college or training provider you attend after Year 11 - **www.gov.uk/1619-bursary-fund**

Many organisations also have their own financial support for students, so check first!

Useful Links:

www.parentalguidance.org.uk/helpinformation/raising-the-participation-age-rpa

www.gov.uk/know-when-you-can-leave-school



Where could I go ?

Sixth Form College

Sixth form colleges typically focus on A-Level (Advanced Level) qualifications – two-year courses that end in an overall examination and a grade from A*-E, with a similar structure to GCSEs but looking at the subject in a lot more depth. Students can study:

Subjects like Biology, Chemistry, Physics, English Literature, English Language, Mathematics, Geography, History, Languages, Religious Education, Music, Art, Photography, Law, Sociology, Psychology, Business Studies, Film Studies, Media Studies, Economics, Politics, Sports Science.

Entry Requirements

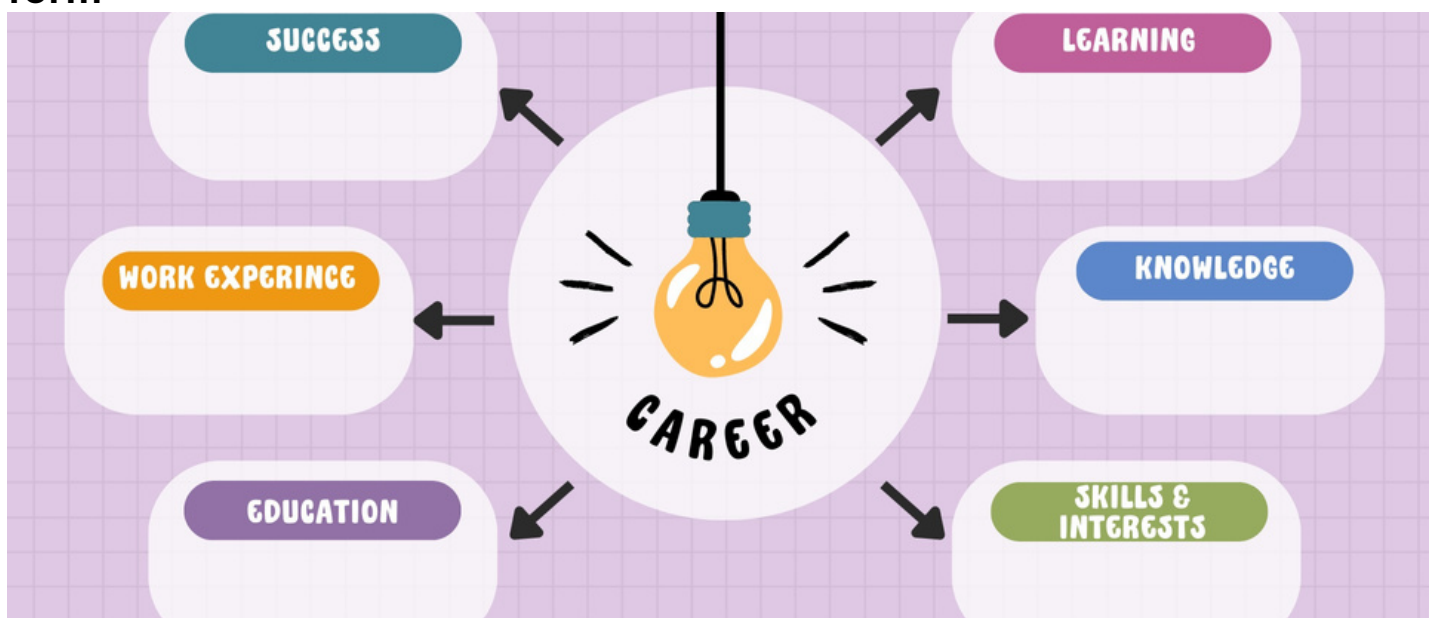
Most sixth form colleges usually ask students to have 5 GCSEs at Grade 4 or above but make sure that you do your research, as some courses, such as A-Level Maths, Physics, Biology and Chemistry, require students to achieve a Grade 6 at GCSE in order to demonstrate their deeper understanding of the subject.

Some Local Options

Gryphon Sixth Form in Sherborne Dorset. www.gryphon.dorset.sch.uk

Huish Episcopi Sixth Form in Langport Somerset. www.huishepiscopi.net

Sexey's Sixth Form in Bruton Somerset. sexkeys.somerset.sch.uk/sixth-form



College

Colleges and training providers usually offer a mixture of A Levels, apprenticeships and other vocational qualifications that focus on a specific area of study in a practical way, which can include:

Hair and Beauty, Childcare, Construction Skills, Business Management, Games Design, Digital Media, Health and Social Care, Music, Automotive Engineering, Food Technology, Fashion Design, Sports, Animal Care, Uniformed Public Services, Performing Arts and Photography.

Entry Requirements

Entry Level/Level 1 – Can require anything from no qualifications up to 3 GCSEs (any grade)

Level 2 – Usually requires 3 GCSEs at Grade 3 or above

Level 3 – Usually requires 5 GCSEs at Grade 4

Some Local Options

Yeovil College- www.yeovil.ac.uk

Strode College- www.strode-college.ac.uk

Bridgwater and Taunton College- www.btc.ac.uk

Kingston Maurward- www.kmc.ac.uk/college

How Do I Apply ?

Students will begin applying for their post-16 options in the Autumn as soon as the term begins and the application process for sixth form, college and apprenticeships takes place throughout the course of the academic year.

A Typical Timeline For Applications

October – Sixth form and college courses visible on websites.

January– Probable closing date for sixth form applications.

NOTE: Colleges do not have the same deadlines but early applications are still advised to secure the courses you want!

November-April – Students begin to receive interviews and offers from sixth forms and colleges.
September – Courses begin and new applications close in readiness for the next academic year.



A Typical Timeline For Apprenticeship Applications

October- students research prospective employers, send out CVs and register on www.findapprenticeship.service.gov.uk

December- deadline for some apprenticeships such as Leonardo Helicopters.

January-July- Applications received and potential candidates notified for all vacancies via college websites and www.findapprenticeship.service.gov.uk

July- September- apprenticeships begin.



Where can my post 16 options take me ?

If you are thinking about a destination after post-16, such as university or higher/degree apprenticeships, it is important to know whether the qualifications you are taking from 16-18 can help you to progress on to these pathways.

Use websites like **www.theuniguide.co.uk** or **www.whatuni.com** to find out whether the course you want to do after Year 11 will allow you to progress on to what you want to do afterwards or speak with staff at the sixth form, college or apprenticeship you are applying to in order to get further details.

For example:

- If you want to study Dentistry at university, you usually need to take A-Levels in Chemistry and Biology/Maths/Physics.
- Apprenticeships have varying entry requirements – some ask for 5 GCSEs at Grade 4 or above while others ask for 2-3 A-Levels

Useful Websites

www.gov.uk/apply-apprenticeship

www.careerpilot.org.uk

www.thestudentroom.co.uk

www.ucas.com

nationalcareers.service.gov.uk

www.icould.com

www.amazingapprenticeships.com

www.young-professionals.uk

www.careermap.co.uk



Buckler's Mead

Careers Timeline

All year groups

Research various careers and post-16 options through our curriculum, trips/visits, college open days, encounters with employers, Work Experience and visiting speakers.

Year 11

September - November

Attend as many College Open Days as possible and make sure CVs are up to date. Send/email CVs to prospective apprenticeship employers and register on

www.gov.uk/apply-apprenticeship

Apply for college courses, ensuring you have a first and second choice of course and college.

December

Some apprenticeship deadlines for a September start (e.g. Leonardo's) Aim to have college applications completed before the end of the autumn term, even if you plan to apply for an apprenticeship. College Interviews start.

May

GCSE Exams begin

June

GCSE Exams finish. Some apprenticeships begin.

Qualification Levels Guide – GCSE to Degree Level

Qualification Levels Guide – GCSE to Degree Level

University
Degree
(BA/BSc/BEng)

Degree
Apprenticeship
(L5 & L6)

Level 6

Foundation
Degree
FdA, FSc

HND
National Diploma
Level 5
HNC
Higher National
Certificate
Level 4

Higher/Degree
Apprenticeship
L4/L5

Level 4 & 5

GCSE
Grades
9-4

Level 2 with
functional skills
or Level 3
without
functional skills/
A Levels

Intermediate
Level 2
Apprenticeship

Level 2 & 3

GCSE
Grades
1-3

Level 1
Functional skills
College/Further
education

Traineeship
(preparation for
apprenticeship)

Level 1