

High Littleton C. of E. Primary School,
High Littleton, Bristol BS39 6HF
Part of the Midsomer Norton Schools Partnership



Tel: 01761 470622 Fax: 01761 472800
Email: office@highlittleton.mnsp.org.uk
Web: www.highlittletonschool.com
Head Teacher: Mr Gareth Griffith

Wednesday 3rd June 2026

Dear Otter Parents/Carers,

I can't believe we've already reached the last term of this academic year – it has gone so quickly! It feels like only yesterday we began our journey together. And here we are, at the start of our last term this academic year. I would like to take this opportunity to express my gratitude for all your support this academic year. I have thoroughly enjoyed our journey: getting to know the children and you and watching them all grow, on so many different levels and in so many different ways! I couldn't be prouder of all the children in Otter Class.

Although it is our last term together, we will not be slowing down yet! We have a few usual events to look forward to, like Year 6 production (always a treat!). We are expecting a Humanist speaker in one of our RE lessons, SARI workshops (Stand Against Racism & Inequality) and looking forward to a class trip to the American Museum. Not to forget the transition day with many exciting activities planned!

This term all year 4 children across the country will be **tested on their recall of multiplication facts**. The results will be shared with you in due course. We have been working on it tirelessly from September and will continue with our twice daily times tables practise as it is a crucial Maths skill used in many units of work. I am immensely proud of each child in Otter Class as they have each made wonderful progress with their recall of times tables. I am hoping that on that day many of them will score 25 points because they are definitely able to achieve the best score. Fingers crossed!

In **Maths** we will realise the remaining units: *Time* unit (your help with practising reading time from an analogue clock at random times throughout the day will be greatly appreciated!); *Shape* (understanding angles, degrees and turns; identifying, comparing and ordering angles; triangles, quadrilaterals, polygons, lines of symmetry), *Statistics* (interpreting charts, line graphs, drawing line graphs) and *Position and direction* (describing position using coordinates, plotting coordinates, drawing 2-D shapes on a grid, translating on a grid and describing the transition). We will also revisit *Fractions*, specifically to work out fractions of amounts.

Please find all the objectives of our remaining units of work attached below.

“Love each other as I have loved you” John 15:12



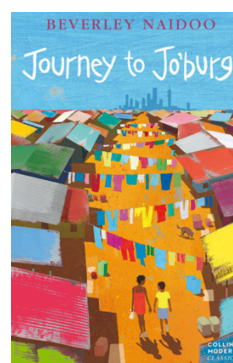
Time	Shape	Statistics	Position and direction
<p>Step 1 Years, months, weeks and days</p> <p>Step 2 Hours, minutes and seconds</p> <p>Step 3 Convert between analogue and digital times</p> <p>Step 4 Convert to the 24 hour clock</p> <p>Step 5 Convert from the 24 hour clock</p>	<p>Step 1 Understand angles as turns</p> <p>Step 2 Identify angles</p> <p>Step 3 Compare and order angles</p> <p>Step 4 Triangles</p> <p>Step 5 Quadrilaterals</p> <p>Step 6 Polygons</p> <p>Step 7 Lines of symmetry</p> <p>Step 8 Complete a symmetric figure</p>	<p>Step 1 Interpret charts</p> <p>Step 2 Comparison, sum and difference</p> <p>Step 3 Interpret line graphs</p> <p>Step 4 Draw line graphs</p>	<p>Step 1 Describe position using coordinates</p> <p>Step 2 Plot coordinates</p> <p>Step 3 Draw 2-D shapes on a grid</p> <p>Step 4 Translate on a grid</p> <p>Step 5 Describe translation on a grid</p>

In **Geography** we will be comparing two European regions: Mediterranean and Somerset, finding similarities and differences between our local area and Italian Bay of Naples. The focus will be on the map work, climate (which will include analysing weather patterns), human and physical features and human processes and interdependence, including ecological issues faced in those areas.

In **Science** Otters will learn to make connections between all the units taught this year: Electricity and circuits; Sound and vibrations; Digestion and food; States of matter; Classification and changing habitats; and to apply knowledge in new context. Through investigating how a flow of liquids compare, we will be working scientifically, including: planning, predicting, plotting, observing, evaluating, measuring, recording, analysing and drawing conclusions. A work of a real scientist!

Reading: Please encourage your child to read as often as possible and continue to listen to them regularly. The children should be completing an online book quiz after each book they have read (if it's available), to help deepen their comprehension skills and to develop thoughtful, reasoned opinions.

All children will have the opportunity to read in school to an adult: in small groups and individually throughout the term. In class, we will finish reading *The Lion Above the Door* by



“Love each other as I have loved you” John 15:12



Onjali Q Raúf (which we have thoroughly enjoyed so far!) and then move on to *Journey to Jo'burg* by Beverley Naidoo.

In **Jigsaw** (our Personal Social Health Education, PSHE) this term we will be releasing the unit 'Changing me' which contains elements of RSE. The Relationships Education (England) Regulations 2019 have made Relationships Education compulsory in all primary schools. The more detailed information about PSHE curriculum and RSE coverage can be found on our website. In year 4 we will be discussing: reproductive organs in males and females, aiming to correctly name body parts; necessity of the egg (ovum) and sperm to merge to create a baby and conception; and bodily changes during puberty including menstruation/periods. Children tend to ask tricky or/and sensitive questions during our sessions and they are always met with age-appropriate responses, sticking to the learning intentions of each lesson. For further details and questions, please don't hesitate to contact me or the school office.

Reminder of weekly routines:

PE will be on Tuesdays (ball skills) and Wednesdays (cricket). Please ensure that the children are wearing weather appropriate clothing as we will aim to exercise outside. Please ensure long hair is tied back and earrings are able to be removed or covered.

English homework (Spellings) will be given out on **Fridays** to be handed in the following **Thursday**. The children will be tested every week. Please encourage your child to practise daily or a few times a week to ensure sound recall of those rules and patterns.

Maths homework will continue to be Doodle Maths; within each week children are expected to get 50 stars and 30 stars for Doodle Tables. Scores will be checked on **Mondays**.

Warm weather gear. Please ensure your child has a **hat in school daily**. That is crucial in helping us enjoy the beautiful sunny weather we will (hopefully!) experience during this summer term. Please also apply **suntan lotion** as daily protection and provide top-up supplies for children to apply themselves during particularly sunny spells. Please remember to bring a named and freshly filled **water bottle** to school **every day** and a fruit snack for morning break.

As always, please feel free to contact me if there are ever any concerns or issues you wish to discuss.

Best wishes,

Ania Woods
Class Teacher

"Love each other as I have loved you" John 15:12

